

Have you seen this insect?

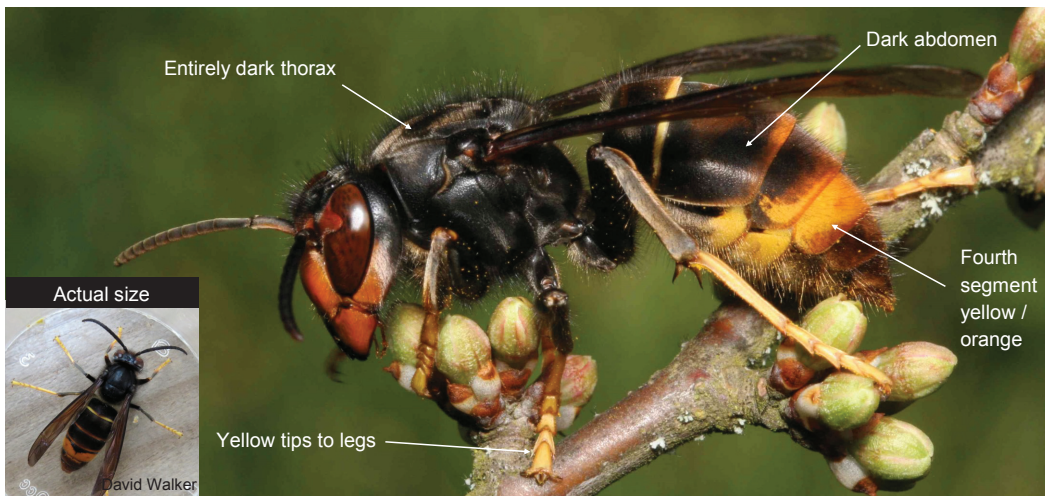
ASIAN HORNET

Vespa velutina

What is it?

An invasive non-native hornet originally from Asia. Asian hornet is a highly aggressive predator of native insects and poses a significant threat to honey bees and other pollinators. In 2004 it was accidentally introduced to France where it has spread rapidly and into neighbouring countries. Since 2016 a number of sightings have been recorded in the UK.

Suspected sightings should be reported immediately using the details provided at the bottom of this poster.



Where might I see it?

May be seen on flowering plants, around beehives, around rotting / fermenting fruit and protein, and at street markets attracted by sweet fruit and fish stalls.

Active from February to November across England and Wales.

What does it look like?

- Slightly smaller than native hornet
- Dark abdomen, 4th segment yellow / orange
- Bright yellow tips to legs (native hornet dark)
- Entirely brown or black thorax (native hornet more orange)

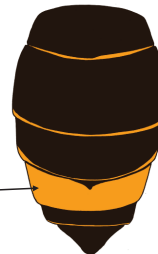
Asian hornet nest



'Hawks' outside honey bee colonies



Asian hornet abdomen Native hornet abdomen



DANGER!

This hornet stings.
Do not disturb an active nest.
Seek advice using the details below.

Report any sightings of this species:

with the free iPhone and Android recording app: **Asian Hornet Watch**

online at: **www.nonnativespecies.org/alerts/asianhornet**

by email: **alertnonnative@ceh.ac.uk**