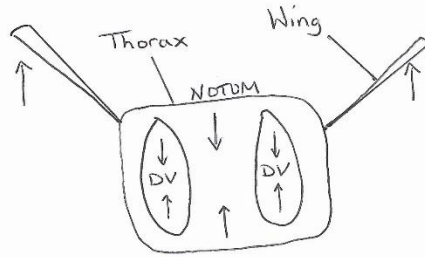
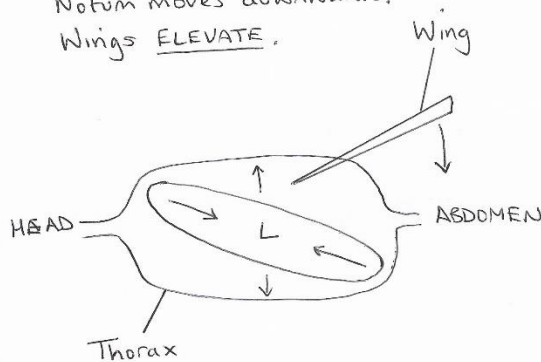


## Indirect Wing Muscles



Schematic diagram of the action of the INDIRECT flight muscles on wing movement

DV = Dorsoventral muscles.  
When DV muscles contract the thorax flattens i.e. Notum moves downwards. Wings ELEVATE.

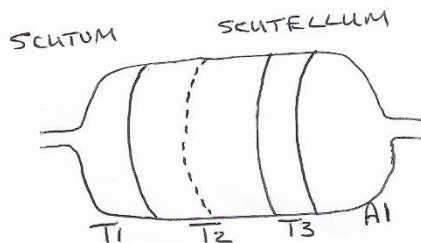


L = Longitudinal muscles.  
When L muscles contract the thorax shortens and the Notum is pulled into a domed shape. The wings are DEPRESSED.

@JLPreece

## Structure of Thorax

The diagram below is a schematic of the joints in the T2 segment which allows the indirect thoracic muscles to deform the thorax allowing movement of the wings.



----- = Sulcus groove  
This area bends and expands acting as a 'joint' in the T2 segment. This action elevates or depresses the FORE wings.

@JLPreece