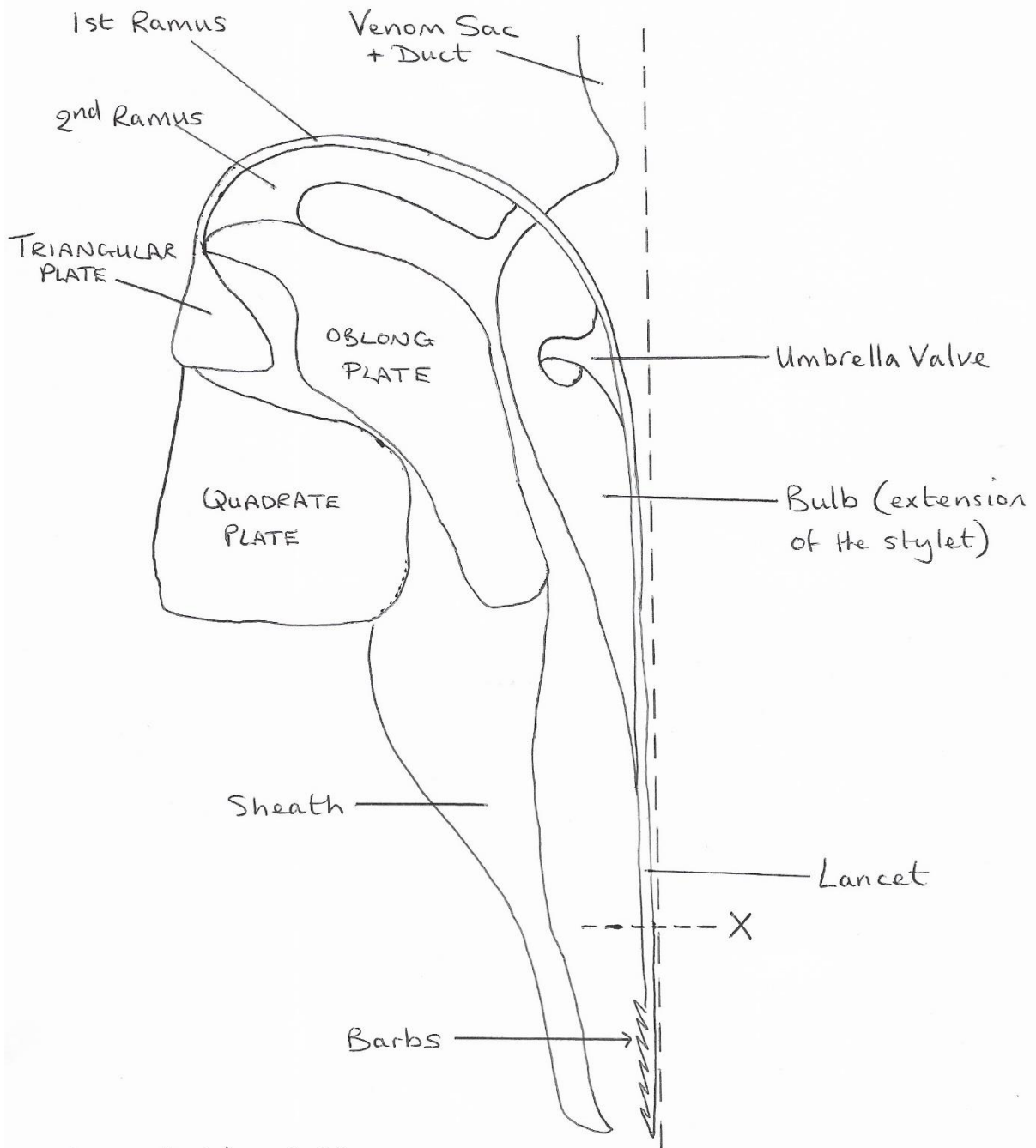
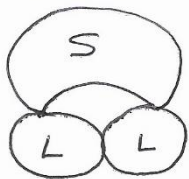


# Sting Apparatus



Cross Section at X

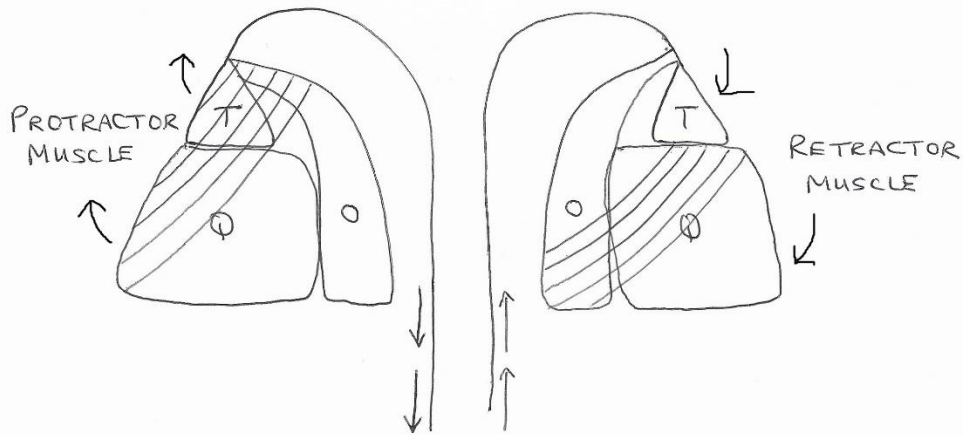


S = Stylet  
L = Lancets

Schematic diagram of one side of the sting apparatus

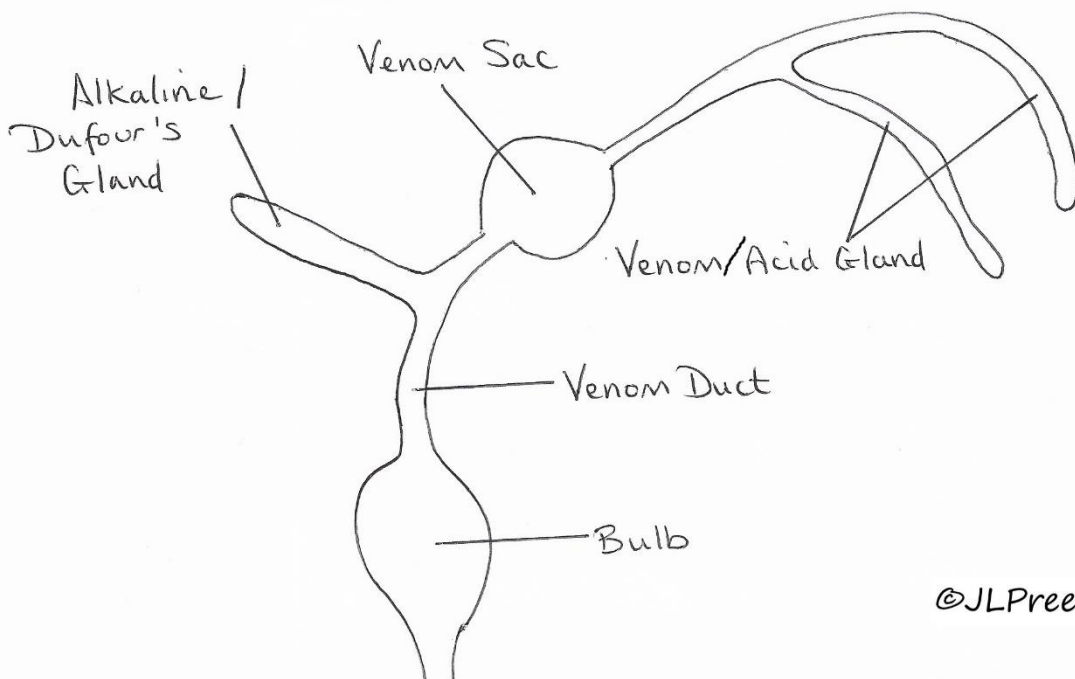
©JLPreece

Diagram showing action of muscles on sting apparatus



(NOTE - both protractor and retractor muscles are found on both sides of the sting apparatus. They have been drawn on separate sides for clarity.)

©JLPreece



©JLPreece

Schematic Representation of Glands Associated with the Sting Apparatus