

Asian Hornet nest identification

Asian hornets produce two types of nest, primary and secondary:

Primary nests:

- Spherical with a small entrance hole at the base, usually 5 to 10 cm in diameter.
- Built in spring by a lone Asian hornet queen, usually in a protected place such as brambles, a hedgerow, or in / on a building.
- **All primary wasp and hornet nests look similar, only report primary nests if seen with Asian hornets. To identify a nest, watch for insects from a safe distance.**

Secondary nests:

- Pear-shaped, entrance hole halfway up the nest, up to 60 cm wide x 80 cm tall.
- Usually found in trees, may also be in buildings and hedges.
- **Use binoculars to identify secondary nests from a safe distance. Do not disturb suspected nests and retreat from any wasp / hornet nests if flying insects are observed.**

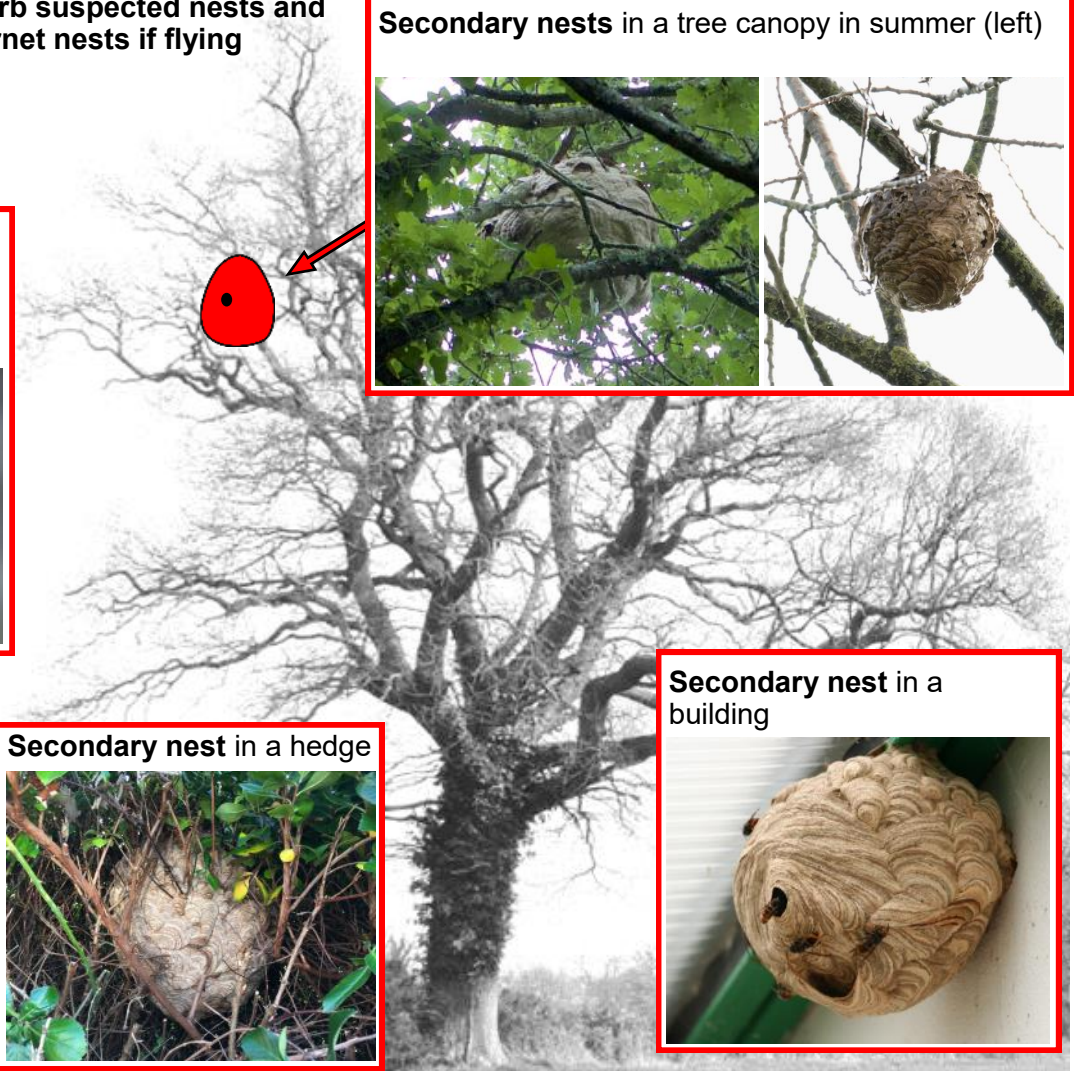
Asian hornet,
Vespa velutina



Secondary nests in a tree canopy in summer (left)



Primary nest. All primary wasp and hornet nests look similar. **Only report if seen with Asian hornet.**



Secondary nest in a hedge



Secondary nest in a building



Alert!

Report sightings of Asian hornet and suspected nests:

- with the iPhone and Android recording app: **Asian Hornet Watch**
- online at: nonnativespecies.org/asianhornet
- by email: alertnonnative@ceh.ac.uk

For assistance with identifying a suspected Asian hornet nest, or to help identify nests, please contact your local Asian Hornet Team (AHT).

Report Asian hornet:



Find an AHT:



Nests of similar species

Secondary Asian hornet nests may be confused with other wasp and hornet nests, or objects in trees. If you suspect you have seen an Asian hornet nest, please use binoculars to check from a safe distance before reporting. See overleaf for details of where to report nests and how to get help with identifying a potential nest.

Asian hornet, *Vespa velutina*

Secondary nest:

- Usually found in trees, may also be in buildings and hedges.
- Pear-shaped.
- Entrance hole halfway up the nest.
- Up to 60 cm wide x 80 cm tall.



Other objects in trees

- Crow and magpie nests.
- Mistletoe.
- Squirrel dreys.

Bird nest in a tree:



Median wasp, *Dolichovespula media*



Secondary nest:

- Usually in bushes that are less than 2 m tall.
- Conical.
- Small opening at lower end, off centre.
- Usually 20 x 25 cm.



Primary nest:

Characteristic tube-shaped entrance (unlike primary Asian hornet nest).



European hornet, *Vespa crabro*

Secondary nest:

- Usually in hollow trees, chimneys, rarely in the open air.
- Cylindrical.
- Wide opening at the bottom.
- Usually 30 x 60 cm.



Common wasp, *Vespula vulgaris*



Secondary nest:

- Usually on the ground, or in confined spaces in buildings.
- Round to conical.
- Small hidden opening at the lower end.
- Usually 30 x 35 cm.

